

Specifications

備注 (Remark)

1. 材料 (Material)

膠芯: PA9T/LCP+30% G.F UL94V-0, 顏色: 黑色

Housing: PA9T/LCP+30% G.F UL94V-0, Color: Black

端子: 磷銅

Contact: Phosphor Bronze

2. 特性 (characteristics):

額定電流: 2.0AMP

Rating Current: 2.0AMP

接觸阻抗: 20mΩ Max

Contact Resistance: 20mΩ Max

絕緣阻抗: 1000MΩ Min

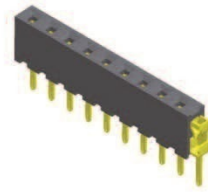
Insulating Resistance: 1000 MΩ Min

耐電壓: AC 500V/分鐘

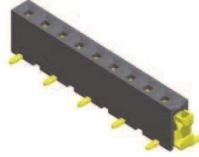
Withstanding Voltage: AC 500V/Minute

溫度範圍: -55° C to +125° C

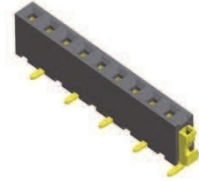
Temperature Range: -55° C to +125° C



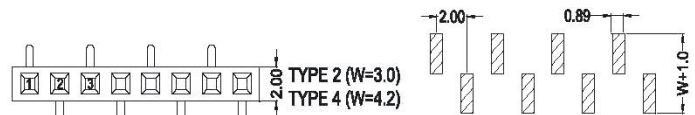
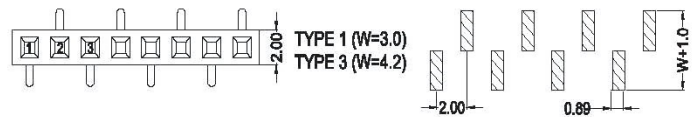
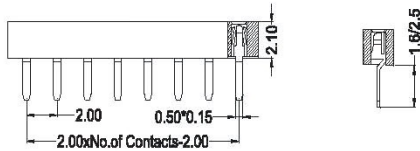
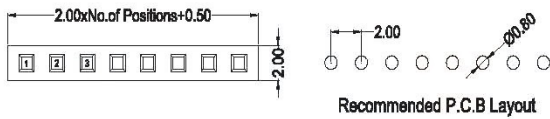
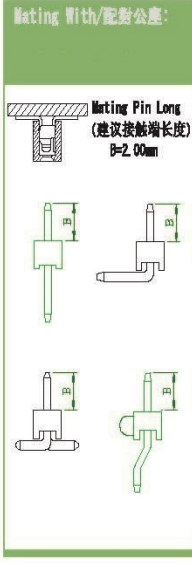
BF200-13PXXXX210X1



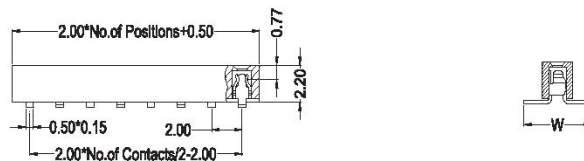
BF200-13SXXXX210X1
BF200-13SXXXX210X3



BF200-13SXXXX210X2
BF200-13SXXXX210X4



Recommended P.C.B Layout



FEMALE HEADER

BF200-13	X	XX	XX	210	X	X
	Contact Shape: P: Straight S: SMT	No. Of Pins Per Row: 02~40P	Contact Plating: Full Of Gold G0=0.8u" ~ G9=30u" S1=Ordinary Tin Plated S2=Matte Tin Plated S3=Tin-plated High-temperature		Packing: A: PE Bag R: Tape & Reel T: Tube D: Tube+CAP E: Tray	Journal Number: 1: Type1 (without Post) 2: Type2 (with Post) 3: Type3 4: Type4